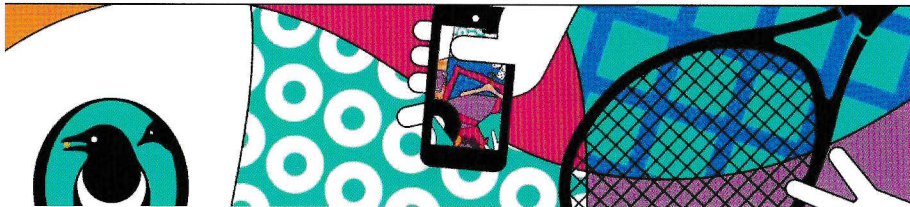


ASPRA LOCAL JUMBLE TRAIL 2017

JUMBLE TRAIL

Saturday 1st July 10am-3pm



ASPRA residents will be setting up stalls in their front gardens selling food, crafts, bric a brac, clothes, toys and much more!

Bargain hunters can navigate their own trail through the streets using a downloadable map showing the locations of all stalls.

If YOU would like to set up a stall, see overleaf.

A Jumble Trail stall is a fantastic opportunity to:

- Declutter your home and garage
- Sell homemade goods/share your culinary skills
- Sell or give away items you no longer need
- Support recycling in your community
- Come along, pick up bargains and find new treasures.

Registration: www.jumbletrail.com/event/ASPRA2017
for details of how to register as a seller. You can also provide some idea of the goods you'll be selling.

Stalls: You can sell the usual items sold at a boot sale: eg. Handmade goods, clothes, books, toys, cakes, bric a brac etc. Your stall should be set up on your own property and should not cause any obstruction on the pavement. Why not share a stall with someone else you know in the ASPRA area? **Lots of stalls in a road attract more footfall, so talk to your neighbours!**

Cost: £5 per stall to cover the cost of marketing and promotional materials: the rest will go to ASPRA to help fund Addiscombe Village's Christmas lights (for the next 3 years!)

More information:

www.theaspra.org.uk/

 [aspra.jumbletrail.1](https://www.facebook.com/aspra.jumbletrail.1)

Any queries: e-mail aspra.jumbletrail@gmail.com
call 020 8656 3666 or 020 406 1342 or 07925 140679

Do support this community event by booking a stall or by coming along on the day to see what's on offer – or better still do both.

Let's make it a fantastic festival day in Addiscombe and Shirley Park – and make new friends in the area.

